



Poole Elementary School Construction



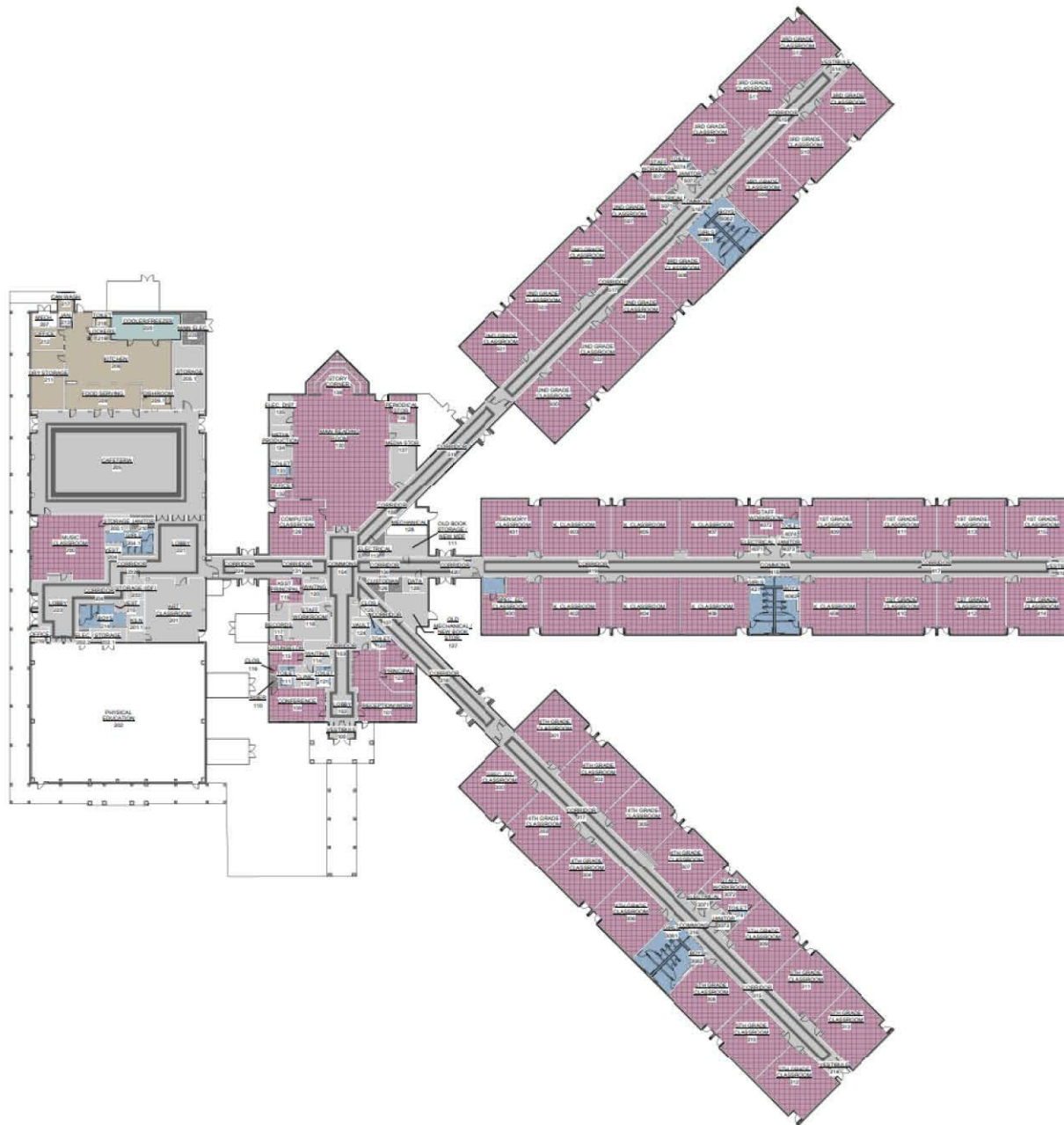
Poole Elementary Renovation / Modification Project

- **Robertson Loia Roof Architects was contracted to design the project in the Summer of 2024.**
- **Scope includes both critical and non-critical infrastructure.**
- **Partial funding by the GA DOE Capital Reimbursement Program reduces cost impact to PCSD.**
- **SmithBuilt Construction has been contracted as the Construction Manager to complete this project.**
- **Project is slated for completion in the Summer of 2025.**

Poole Elementary Renovation / Modification Project

Renovation and Modification Projects refresh the school's systems and finishes. The following scopes are included in this project:

- New LVT flooring; new epoxy flooring; painting walls, doors, and trim
- New HVAC, fire alarm, intercom, LED lighting, and plumbing upgrades
- Modification of generator to maintain power for critical systems and areas
- New flat roof, new gutters and downspouts, and roof restoration services
- Repairs to asphalt
- New cooler and freezer, dishwashing machine, and serving line
- Repairs to doors, frames, windows, etc.



FLOORING LEGEND

-  Luxury Vinyl Tile
-  Industrial Epoxy
-  Restroom Epoxy
-  Diamond Plate Tile
-  Carpet Tile
-  Sealed Concrete
-  Existing Flooring

Typical Paint

Wing C
Accent Paint

Wing A & B
Accent Paint

Wing D
Accent Paint

Gym Ductwork

Wing E
Accent Paint

Trim
Paint

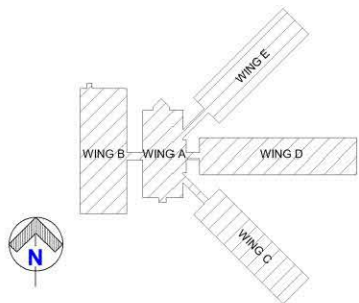
Wall
Base

Luxury Vinyl Tile

Luxury Vinyl Tile

Acoustical
Fabric

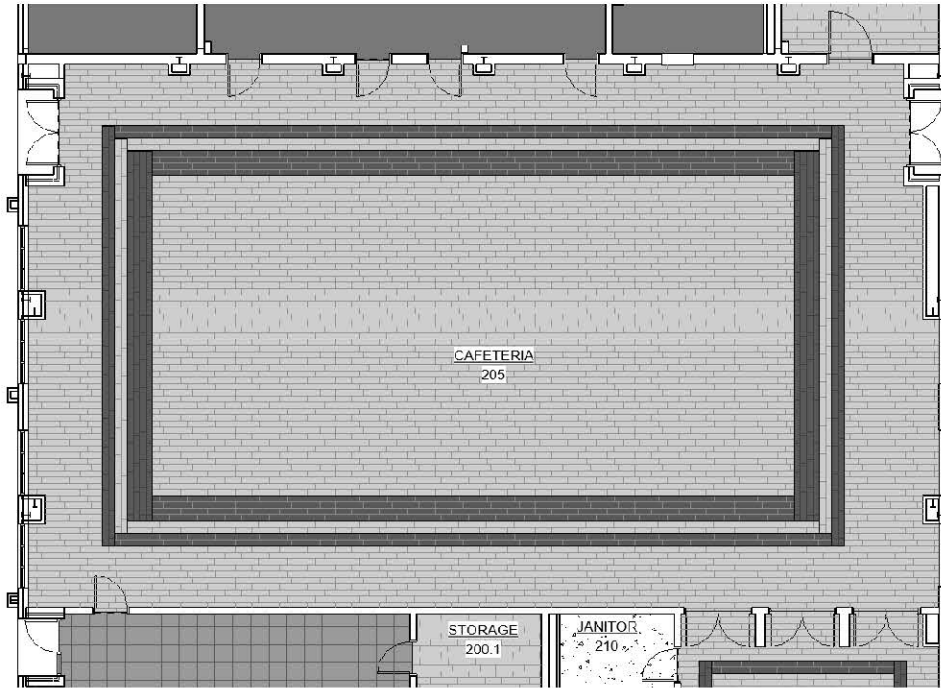
Restroom
Epoxy



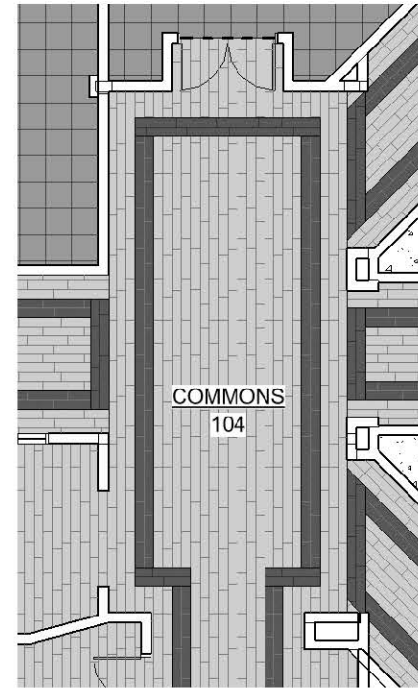
Poole Elementary School – Overall Floor Plan & Finishes



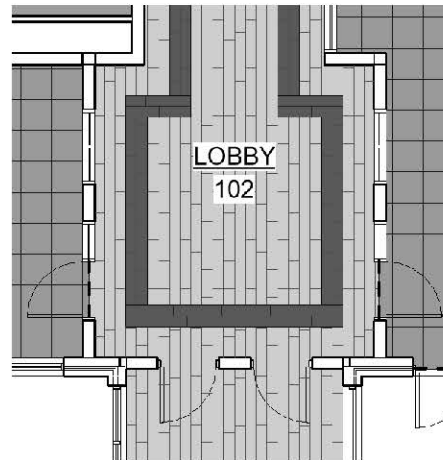
ROBERTSON LOIA ROOF
ARCHITECTS & ENGINEERS
3460 Preston Ridge Road, Suite 275, Alpharetta, GA 30005
770.674.2650 / www.rlrpe.com



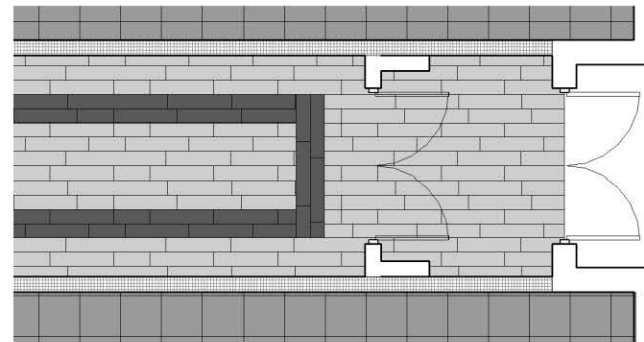
@ Cafeteria



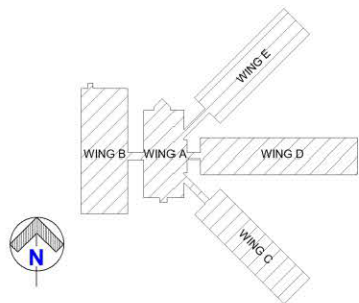
@ Commons



@ Main Lobby



@ Corridor Ends



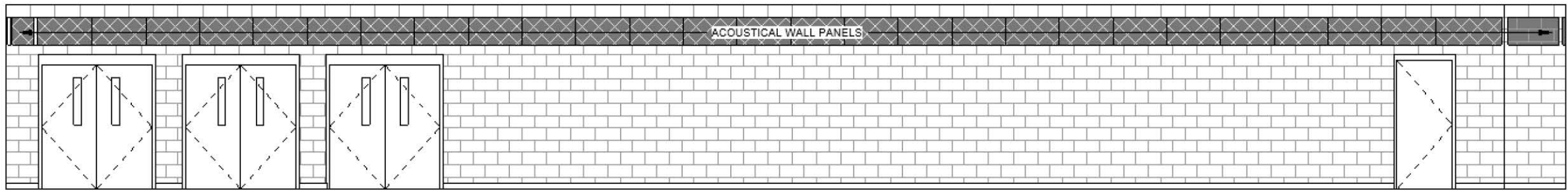
Typical Paint	Wing C Accent Paint
Wing A & B Accent Paint	Wing D Accent Paint
Gym Ductwork	Wing E Accent Paint
Trim Paint	Wall Base
Luxury Vinyl Tile	
Luxury Vinyl Tile	
Acoustical Fabric	Restroom Epoxy



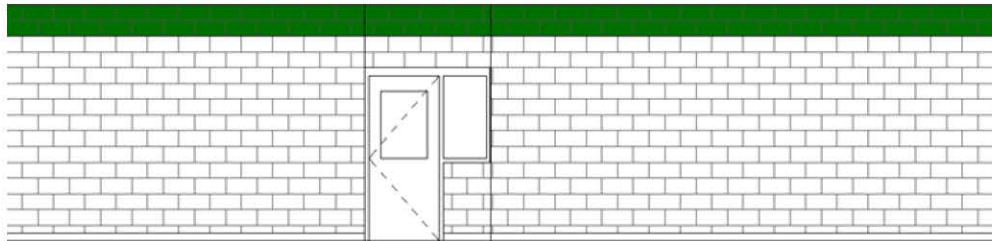
Poole Elementary School – Enlarged Floor Pattern Plans



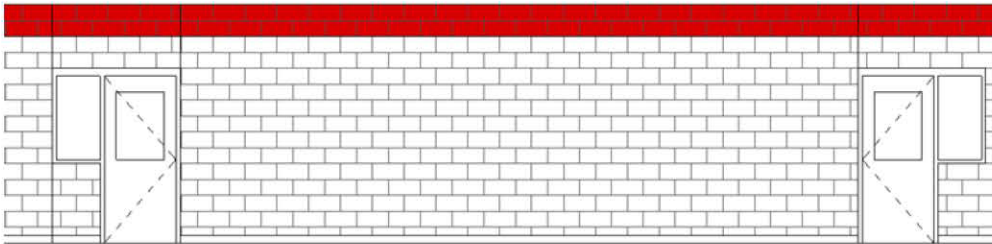
ROBERTSON LOIA ROOF
ARCHITECTS & ENGINEERS
1460 Preston Ridge Road, Suite 275, Alpharetta, GA. 30005
770.674.2650 / www.rlra.com



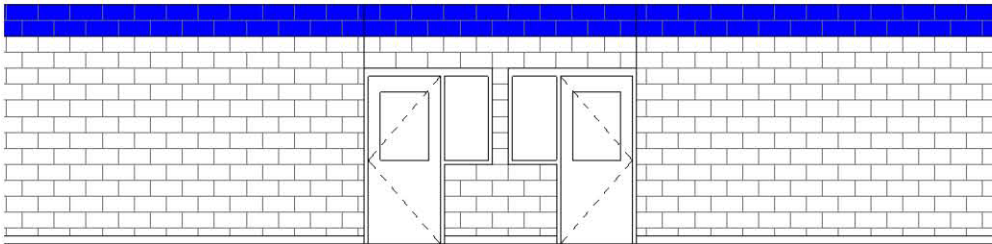
@ Cafeteria



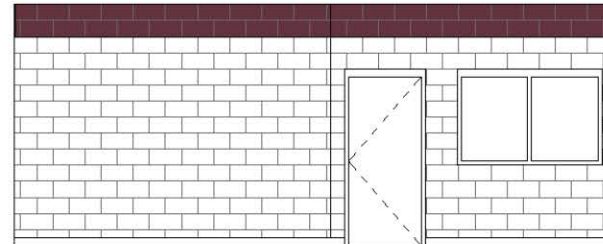
@ Wing C



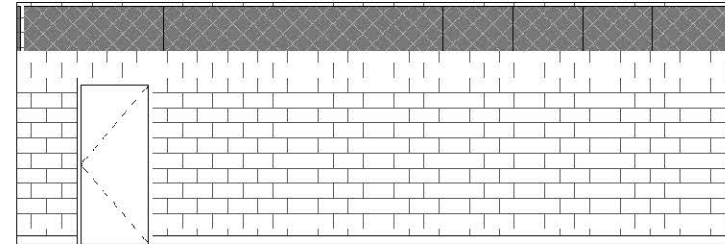
@ Wing D



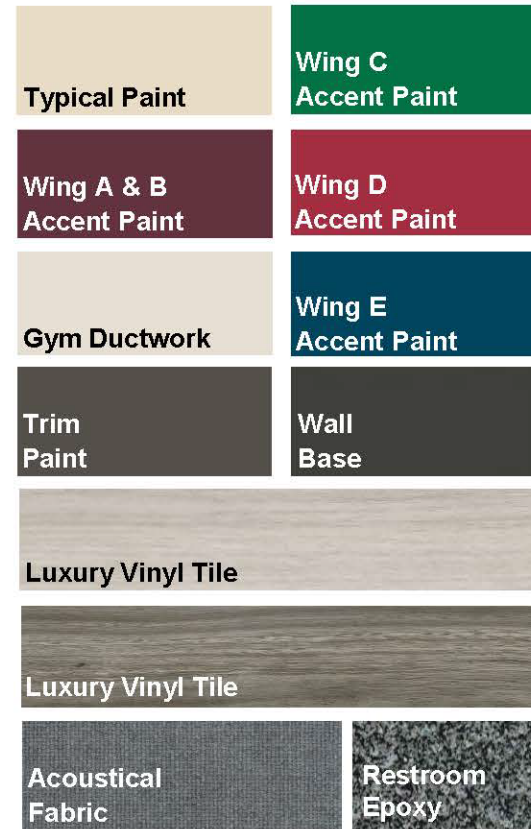
@ Wing E



@ Wing A & B



@ Music Room



Poole Elementary Renovation / Modification Project

Next Steps

- Advisory Group Meeting – January 2025
- Construction Mobilization and After-hours Work – February 2025
- Removal of Staff Belongings/Move Out – End of May 2025
- Substantial Completion – End of July 2025
- Open for First Day of School – August 2025
- Project Close-out – Fall 2025

Poole Elementary Renovation / Modification Project

Project Contacts:

Douglas P. Carey
Executive Director of Facilities
dcarey@paulding.k12.ga.us

Jacob Wix
Director of Capital Improvements
jwix@paulding.k12.ga.us

Lindsey Cantrell
Senior Project Manager
lcantrell@paulding.k12.ga.us



Poole Elementary Renovation / Modification Project



Questions?